

TOOL INFORMATION

MURATA TOOL, LTD.

No.8 January 2019

QUESTION & ANSWER

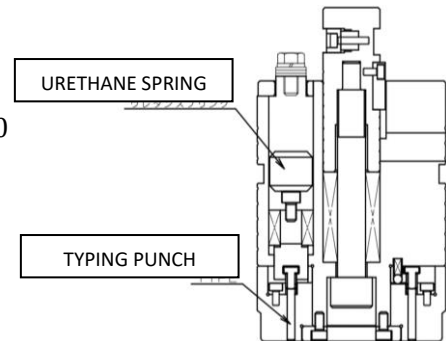
Part Replacement - Marking Tool

Q1: May I purchase the typing punch and the urethane spring alone?

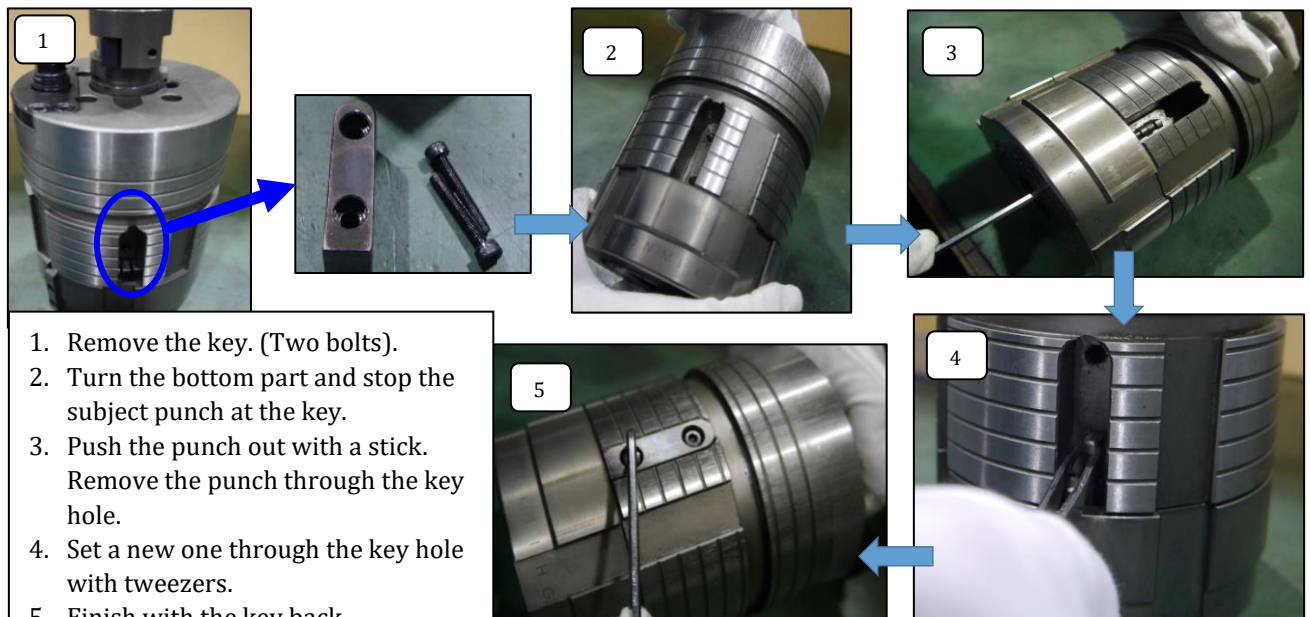
Yes, you can buy the parts respectively. MOQ is one. Tell us 20 letters or 40 letters and how many pieces you need.

Q2: How to exchange the parts?

See below.



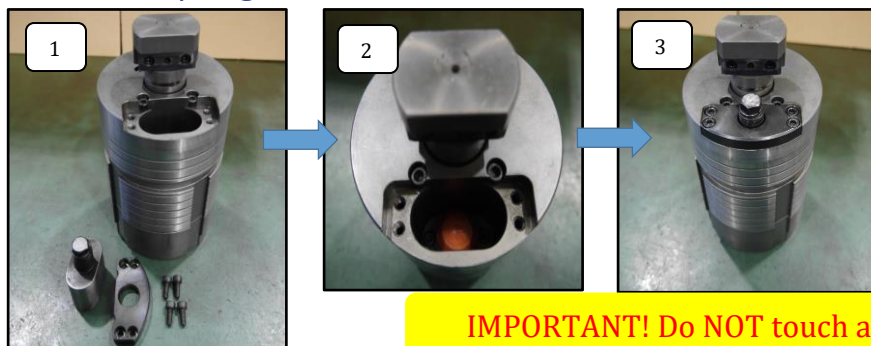
Typing punch



1. Remove the key. (Two bolts).
2. Turn the bottom part and stop the subject punch at the key.
3. Push the punch out with a stick. Remove the punch through the key hole.
4. Set a new one through the key hole with tweezers.
5. Finish with the key back.

IMPORTANT! Do NOT touch any other parts than the above!

Urethane spring

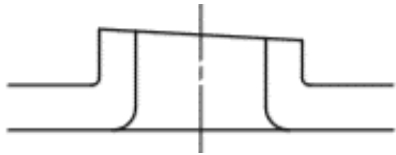


1. Remove the retainer. (Four bolts.)
2. Change the urethane spring through the hole.
3. Put back the retainer.

IMPORTANT! Do NOT touch any other parts than the above!

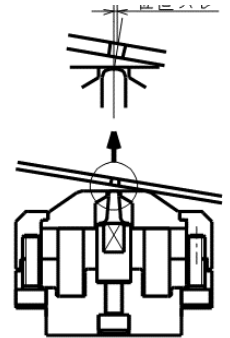
Guide Burring Tool (Guide extrusion tool)

Have you been bothered by the extrusion below?



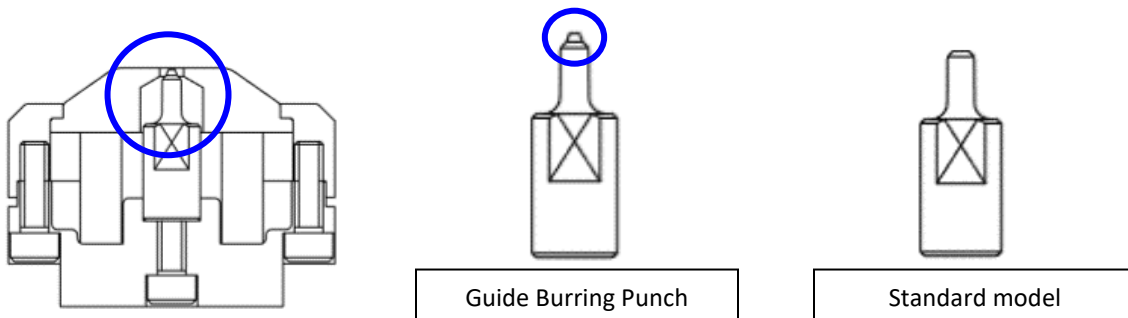
There are possible reasons causing the result.

- The pilot hole and the burring punch are not aligned at the center.
- Because of foreign objects inside/under the die holder, i.e. cut waste or powdery dust, the lower surface is not levelled.
- A forming die is set in proximity. The level of the forming die assembly is higher than others, which slants the metal sheet. (See right)



Have you tried our Guided Burring Tool?

Guide Burring Assembly (Guide extrusion part)



A specially designed guide is given to the punch (see the blue). The guide is a good help to solve the misalignment.

If you already have a standard burring tool, you don't have to buy a whole assembly. Upgrade from standard to the guide is possible by changing a few parts. Just buy a guide punch, its knockout and stripper and change them.