

muratec

MFX-C3400




MANAGEMENT


FAX


COPY


E-MAIL


PRINT


SCAN



A3 COLOUR WITH A COMPACT FOOTPRINT!

Designed for demanding office environments, the Muratec MFX-C3400 combines high quality A3 colour output with flexible multifunction features, allowing you to copy, print, scan and fax, as standard. Yet this flexible functionality comes with a compact footprint, making the MFX-C3400 the smallest A3 colour multifunctional in its class.

For colour production the powerful MFX-C3400 has a 26 page per minute (ppm) print and copy speed, making output of colour documents, such as colour pictures, brochures and reports, quick and easy.

For black-and-white output the MFX-C3400 has a fast 34ppm print speed with duplex (double sided) copy and print offered as a standard feature. Routinely duplex printing and copying drastically reduces paper consumption, saving costs and helping the environment!

And the versatile MFX-C3400 is really easy to use thanks to a large backlit touchscreen, making it simple to intuitively manage document imaging tasks.



- **Network Ready**
- **Full Touch Display**
- **Copy, Print, Fax & Scan**
- **Duplex & Bypass included**
- **50 sheet RADF**
- **Paper sizes A6-A3**
- **Banner 297mm x 1200mm**
- **Front loading paper & consumables**



UI Project

MURATEC's Usability Improvement (UI) Project makes it easy for users to operate our products.

HIGH QUALITY, FLEXIBLE COLOUR OUTPUT

Colour copying, printing and scanning is now a necessity for all offices. And the MFX-C3400 delivers A3 colour output without taking up valuable office space. Because all machine operation and access is at the front, the ultra compact MFX-C3400 fits easily A3 colour in an A4 space.

The MFX-C3400 delivers superb colour output with a super high detail resolution of 1200 by 600dpi for high quality results. Muratec's proven colour print technology ensures subtle tones and gradations of colour to give photographic quality to images in business documents. The RADF (re-circulating automatic document feeder) allows the versatile MFX-C3400 to perform fully automatic duplex (double sided) copying and scanning.

As well as printing onto A3 paper up to 200g/m² in weight, the versatile MFX-C3400 can print full colour banners up to 297 x 1,200mm in length. This means you can produce full colour banners for marketing, internal promotions and point-of-sale using your flexible MFX-C3400



NETWORK READY FOR MAXIMUM EFFICIENCY

- Network Printer
- Security Print
- Scan to E-Mail
- Scan to Folder
- Scan to USB
- Scan to FTP
- Network PC-Fax
- Fax-Forwarding
- DHCP compliant
- LDAP compliant
- Browser Based Configuration

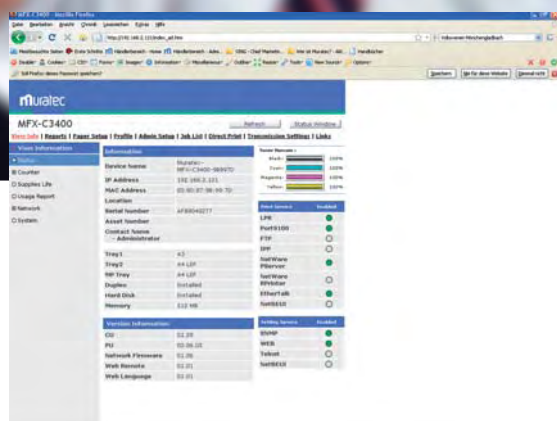
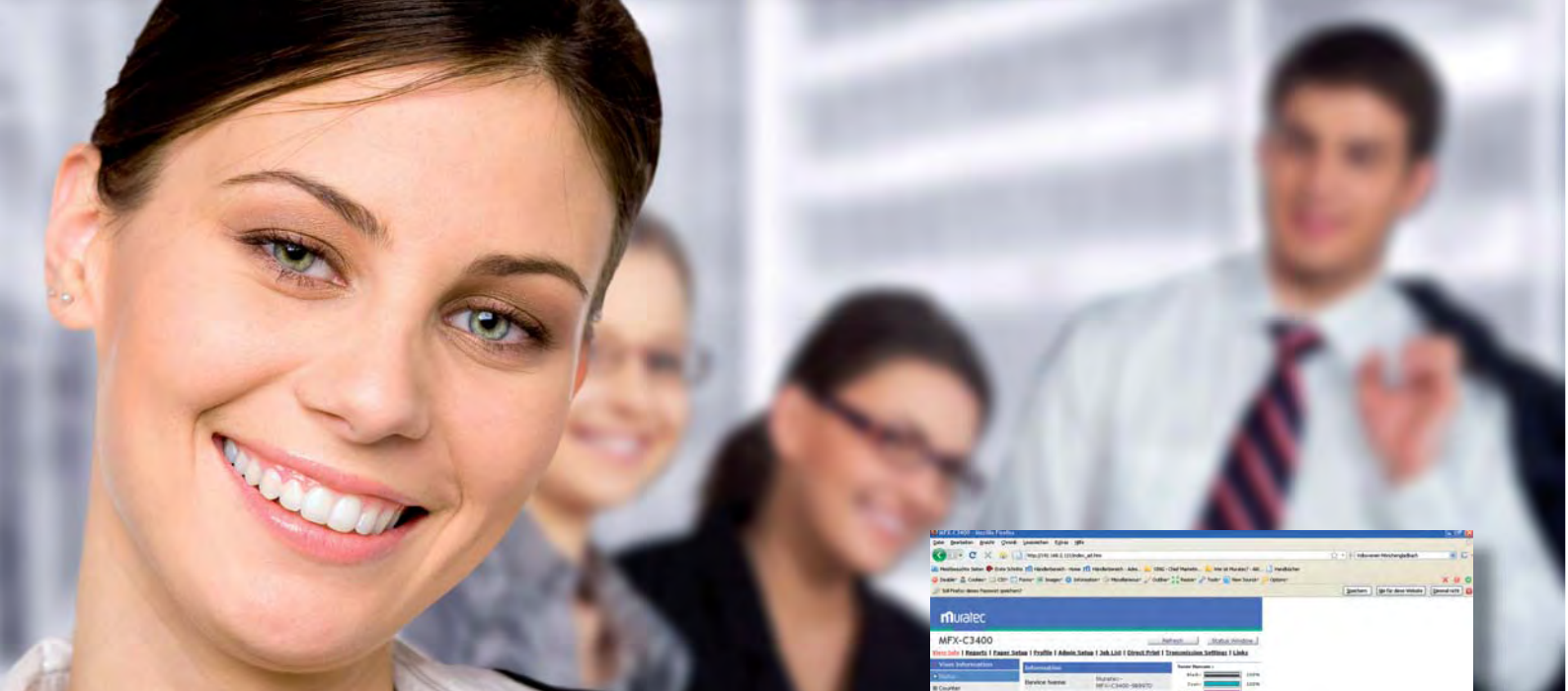


The productive Muratec MFX-C3400 is supplied network ready for network printing and scanning. PCL5e/XL Postscript 3 are supported as standard providing powerful network functionality for work-groups.

Scanning is also simple and effective making it easy to securely scan to folders or archive applications,

as well as scanning to e-mail for sharing printed documents with colleagues without the need to print. The versatile MFX-C3400 can also scan direct to USB memory stick.

Fax functionality includes PC-network fax and fax forwarding saving paper and increasing efficiency.



USER FRIENDLY

MODE SWITCH

Easy selection for copy, fax, scan or print.

SOFT KEYS

User programmable soft keys for easy operation. Customise the functions to match your business

TOUCH DISPLAY

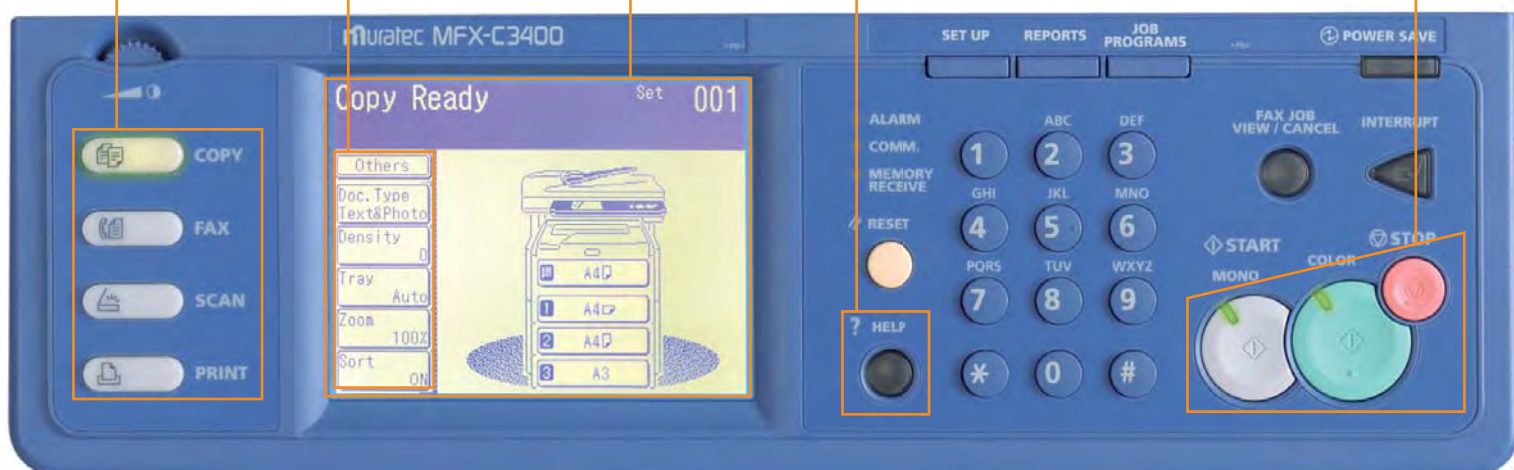
Just press the screen for any function.

HELP-KEY

The Help button supports the user with explanations of the functions and solving problems.

COLOUR/MONO BUTTON

A start button for mono-chrome mode as well as for colour mode ensures your cost control.



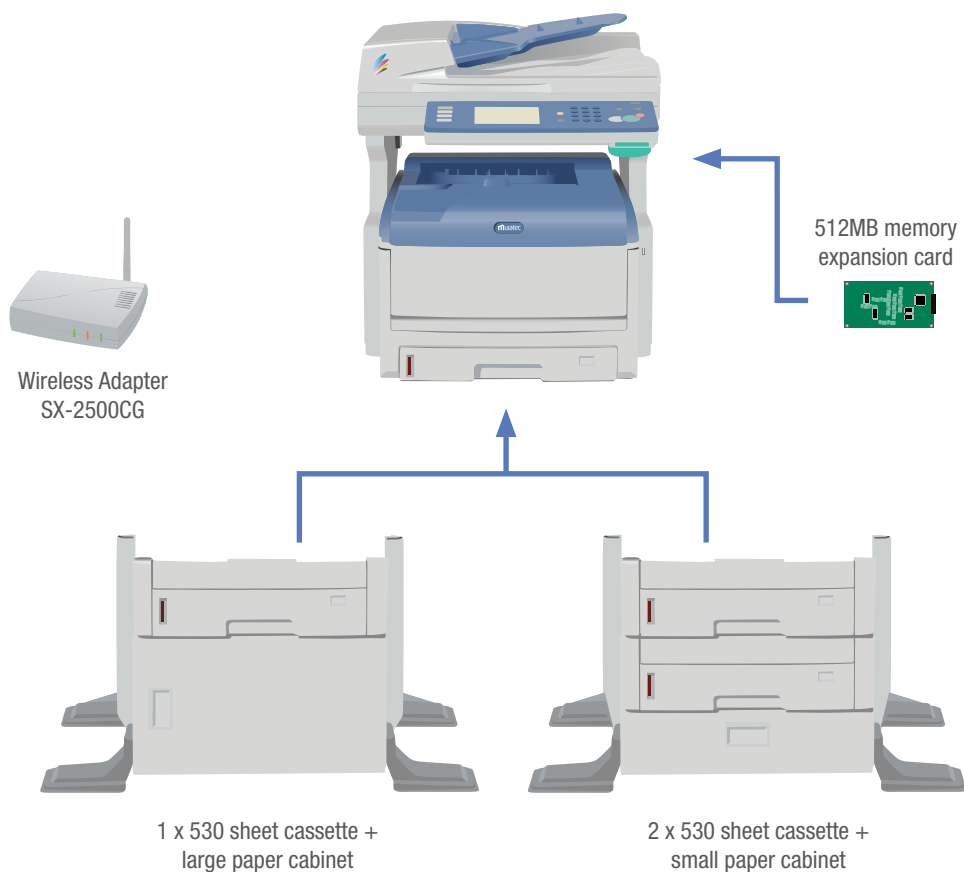
LATEST IMAGING TECHNOLOGY

The groundbreaking MFX-C3400 from Muratec has been designed from first principles to provide a cost-effective and highly productive colour multi-functional, that is packed with technology. Yet its compact footprint means that it fits easily into even the smallest offices. This means that SMEs and workgroups can enjoy the full benefits of A3 colour output with copy, print, scan and fax functionality even in the most confined office spaces. Let the MFX-C3400 meet and exceed your document imaging needs.



*) Caution, without stabilizer machine may tilt over.

OPTIONS / CONFIGURATION



GENERAL FEATURES

Printing/Copying speed	34 pages-per-minute b/w 26 pages-per-minute colour
Printing method	LED
Grey scales	256
Paper capacity	Standard: 1 x 300 sheet cassette (A6-A3, 64 - 120 g/m ²), 100 sheet bypass (A6-A3, 64-200 g/m ²) Max.: 1,460 sheets 250 sheet output tray
Warm up time	90 seconds or less
Display	Touch display
Memory	512MB (Std.), 768MB (Max.)
Hard disk	40GB
Interface	USB 2.0, Ethernet 10/100 BaseT
Network supported	TCP/IP, IPX/SPX, EtherTalk, NetBEUI
Network authentication	LDAP, Kerberos
Operating systems	Windows 2K, XP, XP 64, Vista, Vista 64, Server 2003(x86/x64), Server 2008(x86/x64), Mac OS 10.3 to 10.5
Dimensions	565 x 669 x 658 mm (WxHxD with 1 cassette)
Weight	62 Kg (incl. 1 cassette, RADF and duplex, excl. toner)
Power	220-240 VAC, 50/60Hz
Energy Star	Compliant

COPY

RADF	50 sheets (A5-A3, 42-128 g/m ²)
Copy quantity	1-999
FCOT (First copy output time)	14,5 seconds colour *1 13 seconds B/W *1
Zoom ratio	25-400% (FBS, 1% steps)
Resolution	600 x 600 dpi
Copy functions	Electronic Sorting, Rotate Copy, Duplex Copy, 2/4/8 : 1, Margin Shift, Remove Background



PRINT

Controller
Resolution
Memory
Fonts
Print functions

Standard: PCL6, Post Script 3
Up to 600 x 1200 dpi
512 MB (shared)
86 PCL & 136 PS fonts
Single or Double sided Printing (1:2, 2:2), Security Printing, Banner Printing, Booklet Printing, Combine, Sort, Job Cancel

All data relating to the paper capacities of the document feeder, the bypass tray and the paper cassettes apply to paper weighing 80 g/m² unless expressly stated otherwise.

All data relating to the speed of printing, copying, scanning or faxing apply to paper of an A4 format unless expressly stated otherwise.

Muratec reserve the right to change design, features and specification details without prior notice.

Some brand or product are registered trademarks or product titles of their respective manufacturers. Muratec does not accept any liability or guarantee for these products.

Windows 2000, ME, XP, 2003 and Vista are registered trademarks of the Microsoft Corporation. E&OE

*1 From FBS with 1st cassette selection.

*2 Based on ITU-T Test Document 1 stored at normal resolution.

SCAN

Type of scanning
Resolution
Scan speed
Scan format
Scan/Fax addressbook
Folder shortcuts
Scan functions

Standard: TWAIN, Ethernet
Max. 600 x 600 dpi
32 pages/minute (A4 LEF, 300 dpi)
PDF, TIFF, JPEG, XPS
500 addresses
50 shortcuts
Scan to Folder, Scan to E-Mail, Scan to FTP, Scan to USB
OmniPage (OCR), PaperPort (DMS)

Software included

FAX

Modem speed
Data compression
Memory
Memory backup
Broadcasting
Group dialing
Fax functions

33,6 Kbps
JBIG
16 MB (1,166 A4 pages)*2
72 hours
530 addresses (direct-input: 30)
32 groups
Block Junk Fax, Fax Forwarding, Security Receive, TCR, LDAP

OPTIONS

530 sheet cassette (64 - 176 g/m²) + large paper cabinet, 2 x 530 sheet cassette (64 - 176 g/m²) + small paper cabinet, 512MB memory expansion card, wireless adapter