



MFX-2050 MFX-1450

NETWORK GATEWAY PLATFORM



MANAGEMENT



FAX



COPY



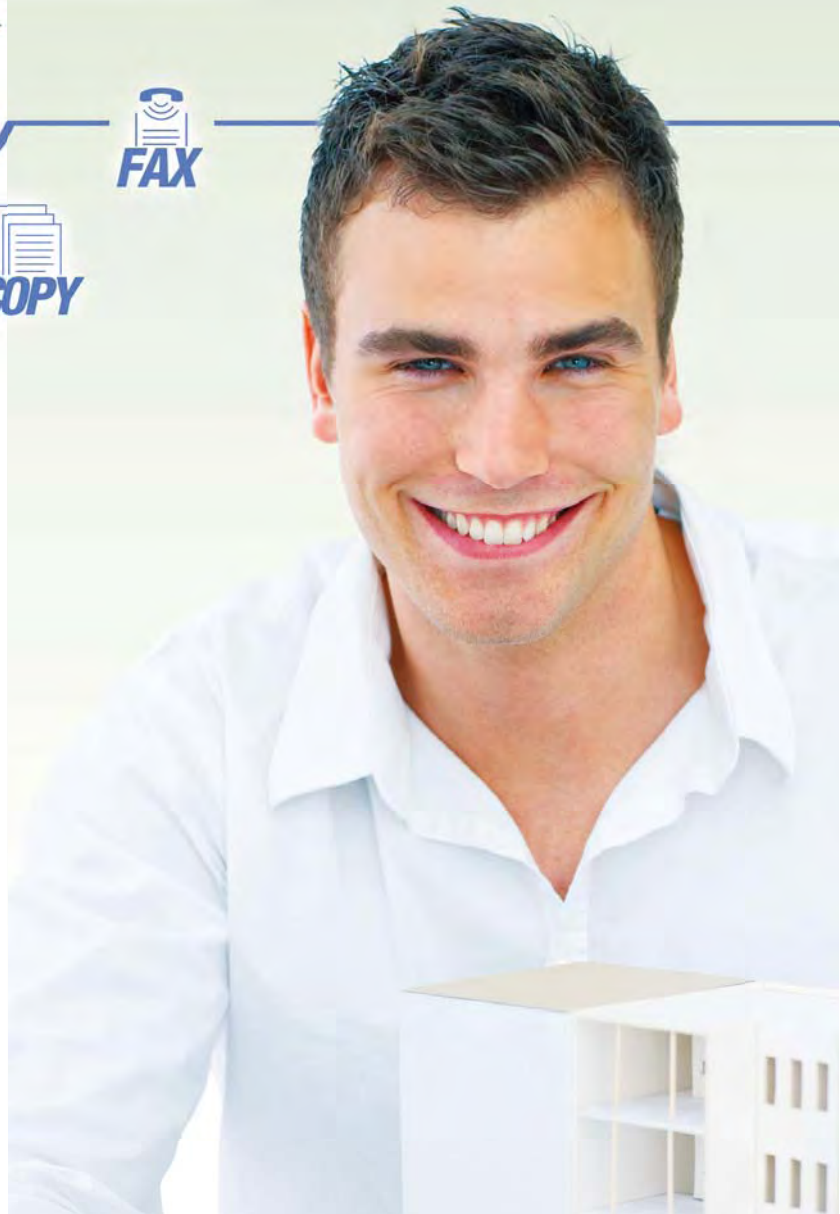
SCAN



PRINT



E-MAIL



COMPACT, NETWORK READY AND EASY TO USE!

Muratec's MFX-2050 and MFX-1450 A4 multifunctionals offer copy, print, scan and fax functionality in one compact, cost-effective unit. Because they feature Muratec's groundbreaking NGP (Network Gateway Platform) technology, they offer an 'out-of-the-box' solution for network connectivity. Muratec NGP devices are designed with a built-in affinity for network connection and are DHCP (Dynamic Host Configuration Protocol) compliant so they can automatically install and configure themselves onto a network.

Key to the ease of use for MFX-2050 and MFX-1450 is the large backlit touch display, making operation easy and intuitive. With a comprehensive feature set, out of the box network connectivity and ease of use, the MFX-2050 and MFX-1450 are the complete answer to your document imaging needs.



- **Network ready**
- **Touch display**
- **Colour Scanner**
- **Easy to use**
- **Print, copy, scan and fax**
- **Duplex unit**
- **80 sheet automatic document feeder**
- **500 sheet paper cassette**
- **50 sheet bypass tray**



UI Project

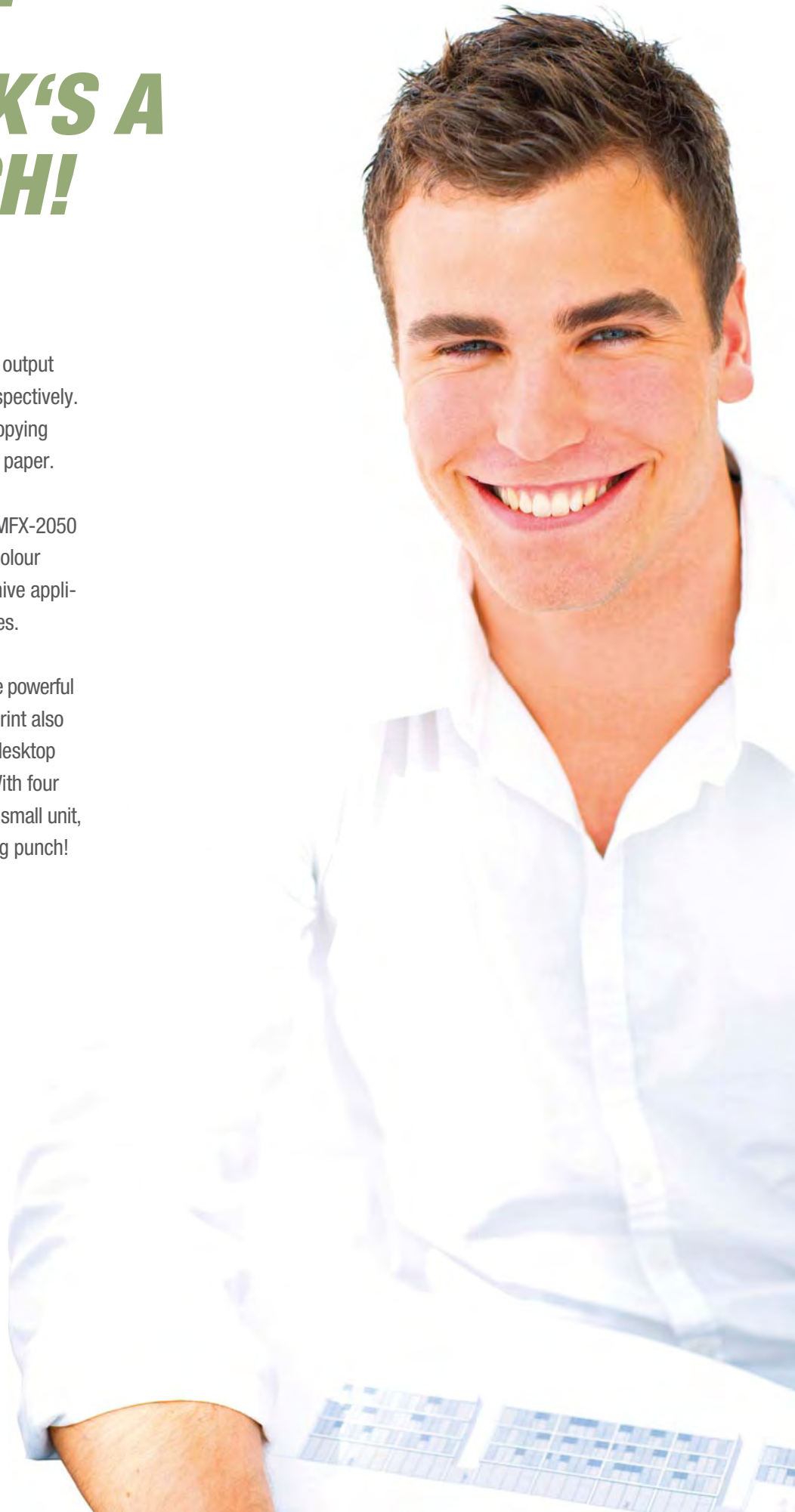
MURATEC's Usability Improvement (UI) Project makes it easy for users to operate our products.

COMPACT MFP PACK'S A BIG PUNCH!

The MFX-2050 and MFX-1450 offer brisk output speeds of 19 and 13 prints per minute respectively. Both have auto-duplex for double sided copying and printing as standard, saving time and paper.

Thanks to Muratec's NGP technology, the MFX-2050 and MFX-1450 can be used for network colour scanning, essential for the document archive applications used by more and more businesses.

While the MFX-2050 and MFX-1450 provide powerful network functionality, their compact footprint also makes them highly suitable for personal desktop operation in the smaller or home office. With four functions (copy, print, scan and fax) in one small unit, the MFX-2050 and MFX-1450 pack's a big punch!



NGP – OUT OF THE BOX NETWORK FUNCTIONALITY

- Network Printer
- Security Print
- Print on Demand
- Colour Scan to Colour Printer
(Create Colour Copies)
- Scan to E-Mail
- Scan to Folder
- Scan to FTP
- Fax Server Integration
- Network PC-Fax
- Internet-Fax
- DHCP compliant
- LDAP compliant
- Browser Based Configuration
- Workflow Management



Muratec NGP technology allows the MFX-2050 and MFX-1450 not only to colour scan to network, to FTP and e-mail, but also to scan to an existing colour printer through the network. With this you are able to create colour copies without any additional costs.

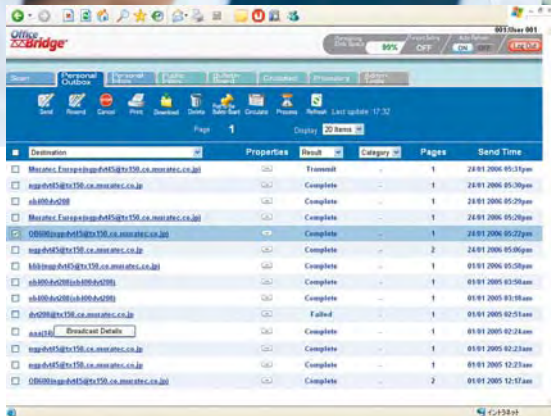
They can also perform Internet, desktop and walk-up faxing.

For scanning to folder the touchscreen makes it easy to select the correct folder, whatever the complexity of the network file structure.

A standard QWERTY keyboard on the display allows users to enter e-mail addresses quickly and enables custom file names to be attached to documents.

Customisation for different users of the command keys on the default screen can make the whole procedure even more convenient. You can even enter settings from any current web browser!

The NGP concept means that the MFX-2050 and MFX-1450 are not just powerful multifunctionals but are also highly productive network devices.



SIMPLICITY AT ITS BEST

MODE SWITCH

Easy selection for copy, fax or scan.

SOFTKEYS

Softkeys on the start-screen can be programmed individually for every mode, for every user. The most used functions become accessible directly from the startscreen. Simplicity at its best.

TOUCH DISPLAY

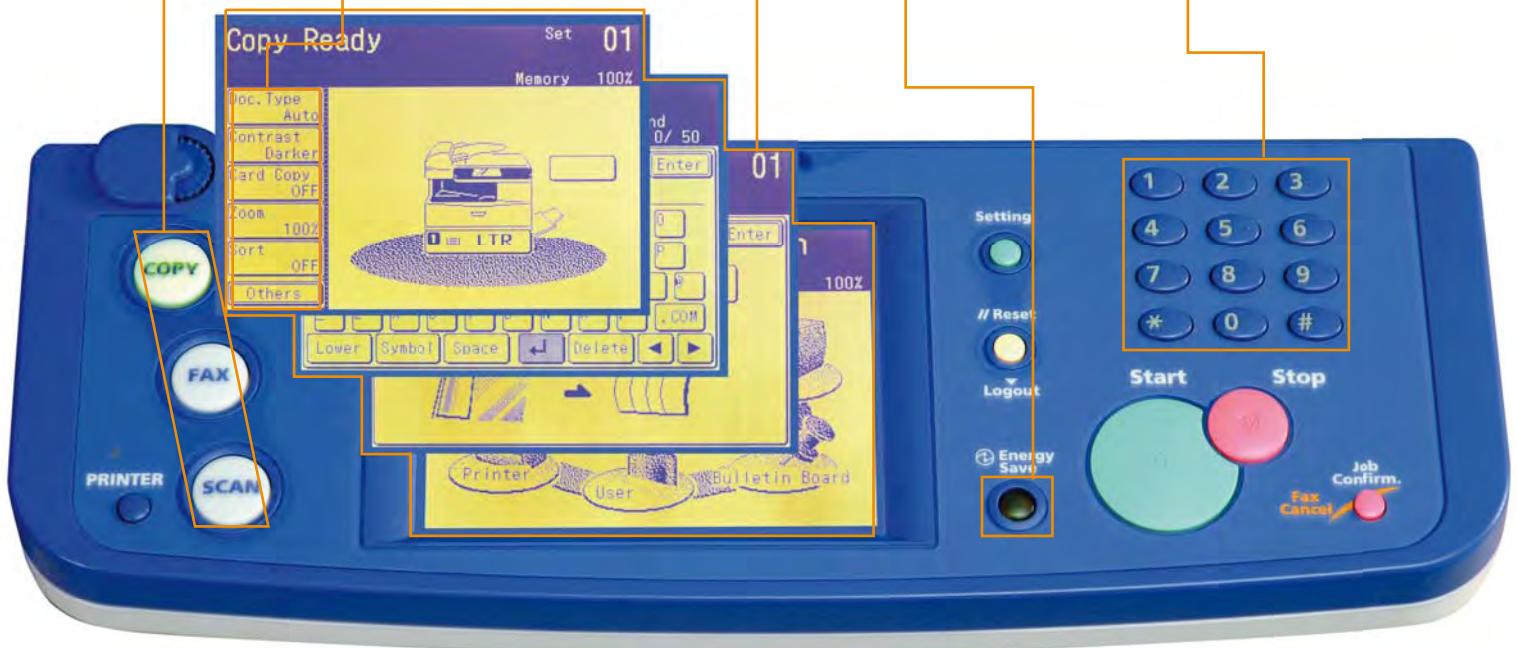
The large touch display simplifies every function.

ENERGY SAVE KEY

Enter the energysave-mode with this button. Reduce your energy consumption. The machine enters this mode automatically after a preset time.

10 KEY PAD

Touch display plus 10 key for easy operation.



COST EFFECTIVE DOCUMENT IMAGING

With the MFX-2050 and MFX-1450, Muratec demonstrates its leading position in the multifunctional market. Not only do these high-spec multifunctionals combine four functions (copy, print, scan and fax) in one compact, easy to use device, they also offer complete network connectivity.

As 'plug and play' solutions the MFX-2050 and MFX-1450 can be network configured and ready to run, straight out the box! And Muratec's breakthrough NGP technology makes network operation simple and easy with clear, menu driven operation.

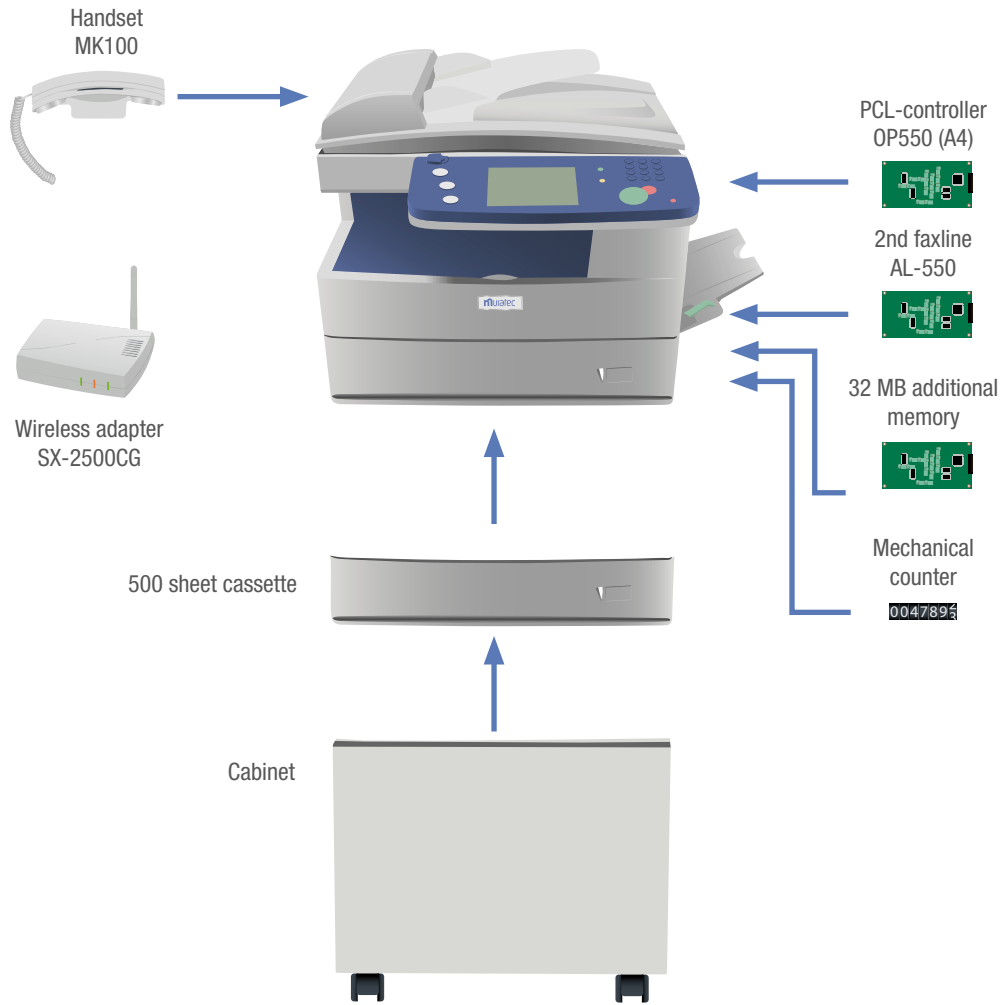
The high productivity feature set found on the MFX-2050 and MFX-1450 means they are the cost-effective solution for all your document imaging needs. Features like auto-duplex, saving paper and postage charges and colour network scanning for document archiving mean the MFX-2050 and MFX-1450 offer unbeatable value.

But you also benefit from Muratec's low Total Cost of Ownership policy ensuring that running costs for these high productivity multifunctionals are amongst the lowest available.

With the MFX-2050 and MFX-1450 you get the most efficient and cost effective document imaging system available today!



OPTIONS / CONFIGURATION



GENERAL FEATURES

Printing Copying speed	19/13 ppm
Printing method	LED
Grey scales	256
Paper feeder	Standard: 500 sheet cassette (A5-A4, 60-90 g/m ²), 50 sheet bypass (A6-A4, 60-120 g/m ²) Max.: 2 x 500 sheet cassettes
Warm up time	23 seconds
Display	Touch Display
Simultaneous function	Quad Access
Interface	Standard: USB, Ethernet 10/100 BaseT
Network protocol	TCP/IP
Operating systems	Windows 98(ethernet only), 98SE, ME, NT4.0(ethernet only), 2000, XP, Server2003 (network print only)*1, Vista
Dimensions	520 x 446 x 490 mm (WxHxD with 1 cassette)
Weight	22.1 Kg (incl. 1 cassette, ADF and Duplex, excl. Toner)
Power	220-240 VAC, 50/60Hz

COPY

ADF	80 sheets (A5-A4, 52-105 g/m ²)
Copy quantity	1-99
FCOT (First copy output time)	10/12 seconds*2
Zoom ratio	25-400% (FBS, 1% steps)
Resolution	600 x 600 dpi
Copy functions	Electronic Sorting, Duplex Copy, 2:1 4:1, Book Copy, Card Copy

PRINT

Controller	Standard: GDI Option: PCL6/5e
Resolution	600 x 600 dpi
Print functions	Security Print, Print on Demand, Duplex Print, Electric Sorting, Job Cancel

SCAN

Type of scanning	Standard: TWAIN, Ethernet Standard
Colour Scan	600 / 300 / 200 / 100*3 dpi
Resolution	Mono: 3.2 seconds (200dpi)
Scan speed	Colour: 8.1 seconds (100dpi)
Scan format	PDF, TIFF, JPEG*3
Folder/FTP Shortcuts	300
Scan functions	Scan to Folder, Scan to E-mail, Scan to Printer, Scan to FTP, E-mail Broadcast, Folder Broadcast

FAX

Modem speed	33.6 Kbps
Data compression	MH, MR, MMR, JBIG
Transmission speed	2 seconds
Memory	8 MB (650 A4 pages)*4 Max.: 40 MB (3,370 A4 pages)*4
Memory backup	72 hours
Address book	1,000 addresses (max: 2,000)
Broadcasting	1,030 addresses (direct dial: 30)
Group dialing	100 groups (max: 200)
Fax functions	Block Junk Fax, Fax Forwarding, Security Reception, Fax-E-Mail Mixed Transmission, Confirmation History, LDAP

OPTIONS

PCL-controller, 32 MB additional memory, 500 sheet cassette, 2nd faxline, mechanical counter, handset, wireless adapter, cabinet

All data relating to the paper capacities of the document feeder, the bypass tray and the paper cassettes apply to paper weighing 80 g/m² unless expressly stated otherwise.

All data relating to the speed of printing, copying, scanning or faxing apply to paper of an A4 format unless expressly stated otherwise.

Muratec reserve the right to change design, features and specification details without prior notice.

Some brand or product are registered trademarks or product titles of their respective manufacturers. Muratec does not accept any liability or guarantee for these products.

Windows 98SE, NT, 2000, ME, XP, 2003 and Vista are registered trademarks of the Microsoft Corporation. E&OE

*1 Utilities (InfoMonitor etc) are not supported.

*2 From FBS with 1st cassette selection.

*3 Colour scan only

*4 Based on ITU-T Test Document 1 stored at normal resolution.

